

Off-Site Data Storage

The Ultimate Protection for Disaster Recovery

No Data, No Business

When your business survives on information, you can't afford to leave data unprotected. Off-site storage protection is more than just data security, it's business security. The information that keeps your business in business should not be a susceptible target for disasters. By housing your data media off-site in a protected location, you can spend less time worrying about the security of your information assets and more time focusing on the business activities that maximize your efforts.

Structural Protection

The CSC storage vault has been designed as a "building within a building". It is an environmentally controlled room that meets ANSI storage standards for microforms (fiche and film) and magnetic media. The roof is designed as an external roof even though it is within a major structure with another roof suspended above. Additionally, the vault has a 24/7 monitored security system, coded entry doors, restricted access, fire suppression, climate control, concrete block walls with no internal plumbing fixtures, and HVAC units all located outside the building, you can rest assured the life of your data is not only protected, but is extended because of this secure structure and controlled internal environment.

Security Beyond Natural Disasters

Accounting for less than five percent of data-loss events, tornadoes, floods and fires aren't the only risks when it comes to data security. The largest threat isn't natural sources, it's human sources. By using an outside vendor for housing critical information, you protect your data from dishonest or irritated employees as well as those who may unknowingly delete or misplace documents. Other factors such as office relocation, network system changes and computer viruses can also contribute to serious loss of data.

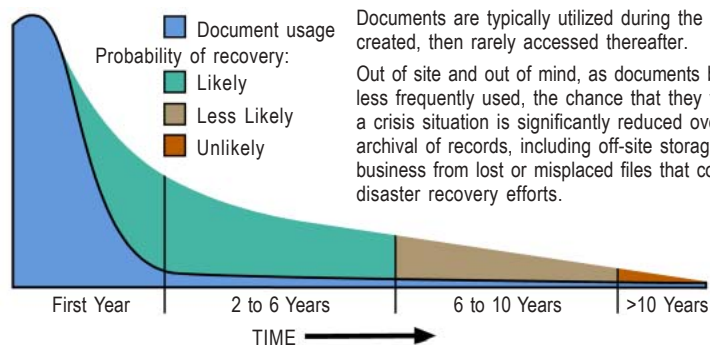
Disaster Recovery – At Your Service

Even though your data is off-site, it is accessible 24/7. Information can be hand delivered, faxed, e-mailed or air mailed anywhere to meet your recovery needs. Whenever disaster strikes, we are ready to retrieve the information you need to continue business without interruption.

The Only Approach to Data Security

Once disaster strikes, the damage has been done. There's no reversing the action. The unexpected nature of disasters requires a proactive approach to data security – not a reactive one. As time goes on, chances for recovering information is severely diminished. Protecting vital information now will ensure that your business can find and restore the information it needs.

Document Life Cycle – Probability of Recovery Without Proper Archival



Most corporate data resides in several different types of storage media. Being able to utilize that media for years to come is a crucial element in disaster recovery planning.

Our off-site storage services include maintaining the software technology and equipment to retrieve any type of storage media – so you don't have to.

The CSC Group
Improving Your Information Assets

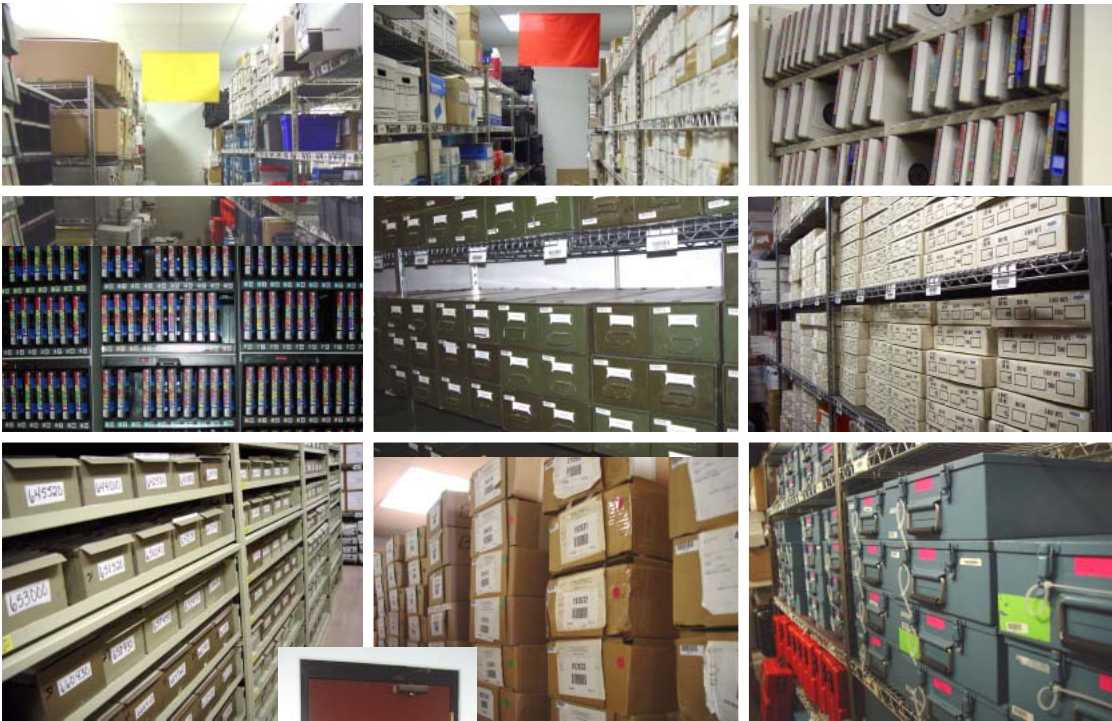
It Only Takes a Moment to Lose a Lifetime of Information. Off-Site Storage Provides the Best Protection.

With The CSC Group's Off-Site Data Storage services, the risk of serious loss of information is eliminated. Our facility offers you the ultimate protection for your critical data and 24/7 recovery services. Stored in a specially designed building that meets ANSI storage standards for microforms (fiche and film) and magnetic media, your information is securely protected from natural disasters and human error.



Our storage vault is designed as a "building within a building" and staffed with a dedicated team of professionals that have the knowledge and training needed to handle any type of media.

In addition to securing storage media, we offer T-1 line FTP transmission capabilities, bar-coded inventory tracking, computerized reporting, media cycling services and disaster recovery planning.



Temperature and humidity are maintained at Professional Records & Information Services Management (PRISM) specifications.



The vault's roof is designed as an external roof even though it is within a major structure with another roof suspended above. 24/7 monitored security system, coded entry doors, restricted access, fire suppression, climate control, concrete block walls with no internal plumbing fixtures, and HVAC units located outside the building.

Call The CSC Group today for an evaluation of your process and available options.

The CSC Group
Improving Your Information Assets
www.csc-groupinfo.com